

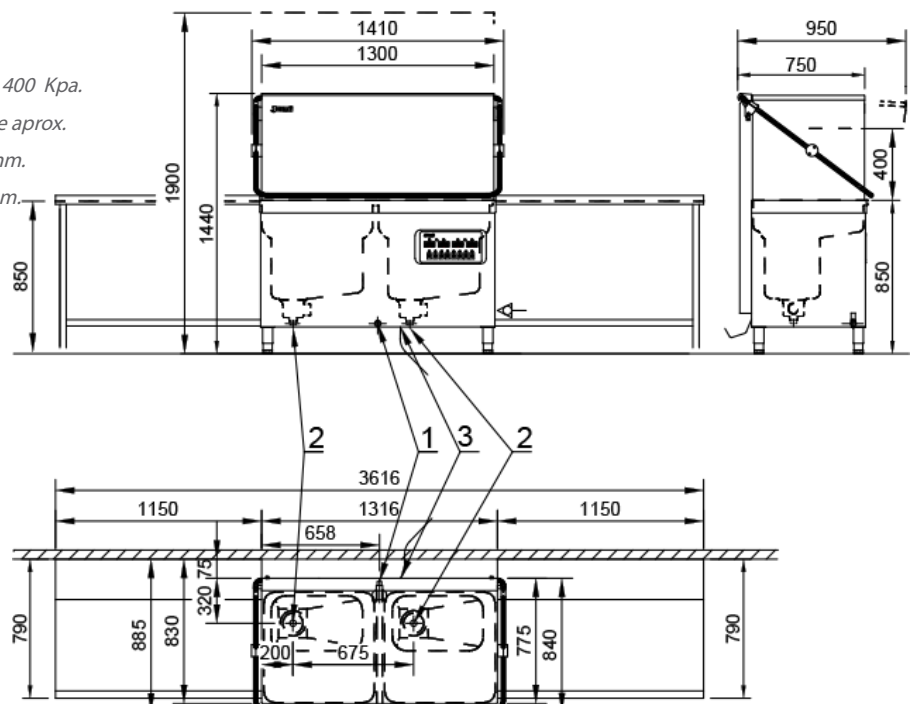
Washing Pass Through

Selva de Mar, 122-128
08020 Barcelona, España
Tel. 0034 93 308 31 54
Fax. 0034 93 303 38 73
jemi@jemi.es
www.jemi.es

Mod. GS-102 M

Characteristics

Externals dimensions.	1410 x 850 x 1440 mm.
Weight.	147 Kg.
Dimensions of racks.	2 500 x 500 mm.
Output racks hour.	60 / 120
Production hour	1280 / 1920 plates
Usable height.	400 mm.
Total power.	15 Kw.
Wash pump power.	2 x 1,5 Kw. 2 x 500 l/min.
Boiler element heater.	2 x 6 Kw. Triphasic.
Tank element heater.	2 x 6 Kw. Trifásic.
Voltage.	400V. / III / 50-60Hz. 230V. / III / 50-60Hz.
Wash cycle.	1 2 minutes
Water consumption by rinsing.	2 x 3 litres
Wash tank.	2 x 58 litres
Boiler capacity.	2 x 8 litres
Numbers of wash arms upper.	2 x 4
numbers of wash arms bottom.	2 x 4
Numbers of jets.	2 x 48
Ø Jets.	Ø 6 mm.
Rinse jets upper.	2 x 8
Rotating bottom.	2 x 8
Water inlet.	3/4"
Pressure for the water supply.	2 - 4 bars / 200 - 400 Kpa.
Required flow.	30 litres / minute aprox.
Drain.	Ø ext. valve 28 mm. Ø ext. tube 32 mm.



leyenda

1. Water inlet 3/4" max. 60° C.
2. Drain Ø 50 mm.
3. Cable length 1,5 m.
230V. III 4 x 10 mm².
400V. III 5 x 6 mm².
Power: 15 Kw.

