

# Data Sheet

**Jemi** Simply built to last

Professional Dishwashing and Cooking Equipment

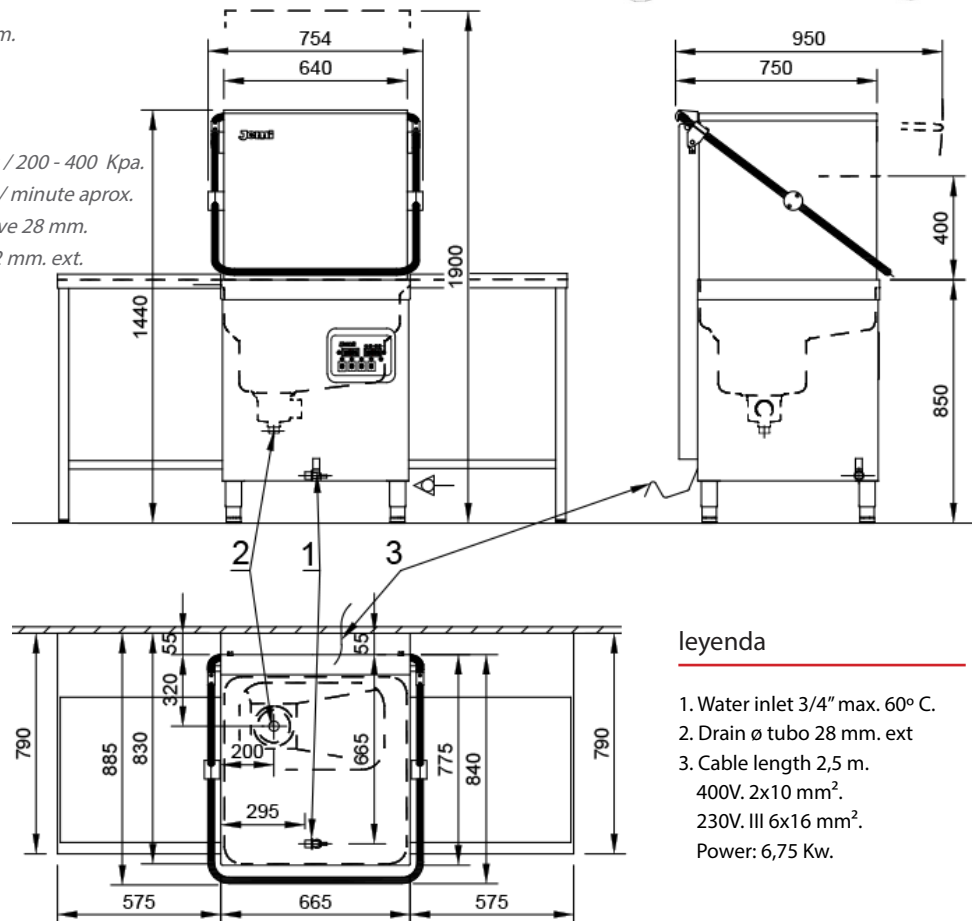
Selva de Mar, 122-128  
08020 Barcelona, España  
Tel. 0034 93 308 31 54  
Fax. 0034 93 303 38 73  
jemi@jemi.es  
www.jemi.es

## Washing Pass Through

### Mod. GS-83 E

#### Characteristics

Externals dimensions	775 x 850 x 1440 mm.
Weight	83 Kg.
Dimensions of racks	500 x 500 mm.
Output racks hour	30
Output hour	640 plates
Usable height	400 mm.
Total power	6,75 Kw.
Wash pump power	0,74 Kw. 320 l/ min.
Boiler element heater	6 Kw. Triphasic.
Tank element heater	4,5 Kw. Trifásic.
Voltage	400V. / III / 50-60Hz. 230V. / III / 50-60Hz.
Wash cycle	2 min.
Water consumption by rinsing	2,4 / 2,6 Litres
Wash tank	39 Litres
Boiler capacity	8 Litres
Numbers of wash arms upper	4
numbers of wash arms bottom	4
Numbers of jets	48
Ø Jets	Ø 4,75 mm.
Rinse jets upper	8
Rinse jets lower	8
Water inlet	3/4"
Pressure for the water supply	2 - 4 bars / 200 - 400 Kpa.
Required flow	30 Litres / minute aprox.
Drain	Ø ext. valve 28 mm. Ø tube 32 mm. ext.



#### leyenda

1. Water inlet 3/4" max. 60° C.
2. Drain Ø tubo 28 mm. ext
3. Cable length 2,5 m.  
400V. 2x10 mm<sup>2</sup>.  
230V. III 6x16 mm<sup>2</sup>.  
Power: 6,75 Kw.

