

Technical Sheet

Cookers 600 EV Series Neutral Cupboards

Jemi Simply
built to last

Professional Dishwashing
and Cooking Equipment

Selva de Mar, 122-128
08020 Barcelona, España
Tel. 0034 93 308 31 54
Fax. 0034 93 303 38 73
jemi@jemi.es
www.jemi.es

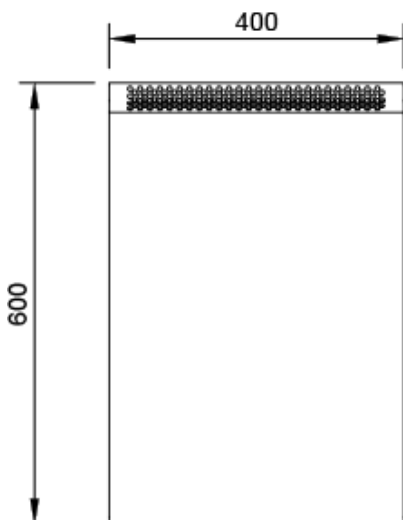
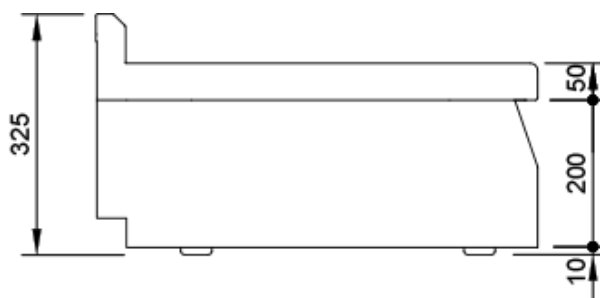
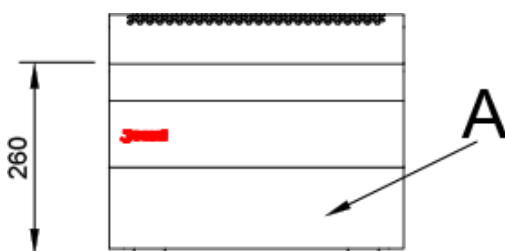
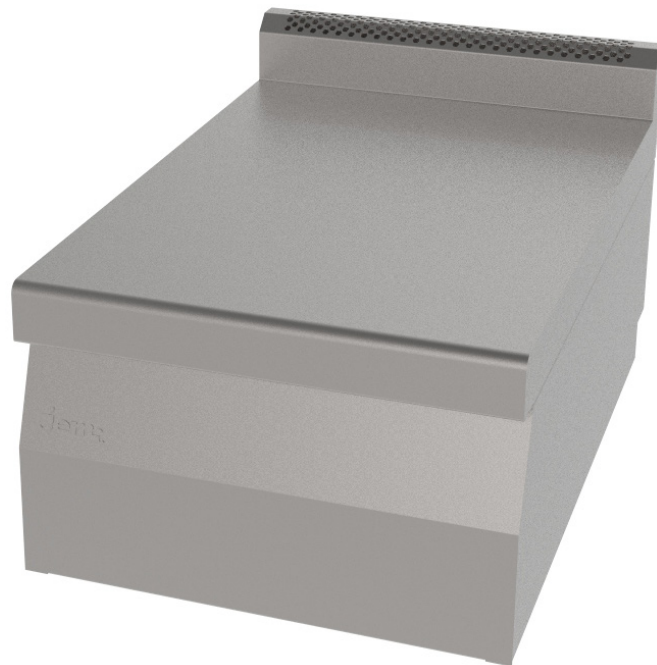
Mod. SMN64 EV

Characteristics

External dimensions 400 x 600 x 260 mm.

Weight 23 Kg.

Stainless steel (AISI 304) 2 mm.



Index

A. Characteristics plate
(inside panel)

