

Ficha Técnica

Cocinas serie 600 EV Muebles neutros

Jemi Simply
built to last

Professional Dishwashing
and Cooking Equipment

Selva de Mar, 122-128
08020 Barcelona, España
Tel. 0034 93 308 31 54
Fax. 0034 93 303 38 73
jemi@jemi.es
www.jemi.es

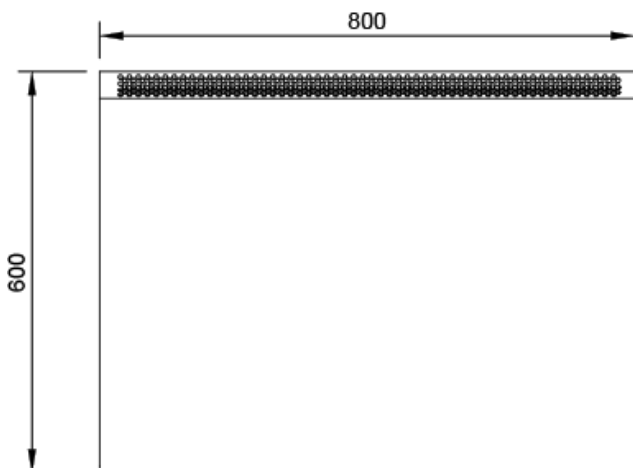
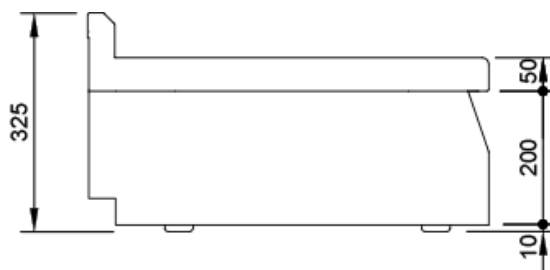
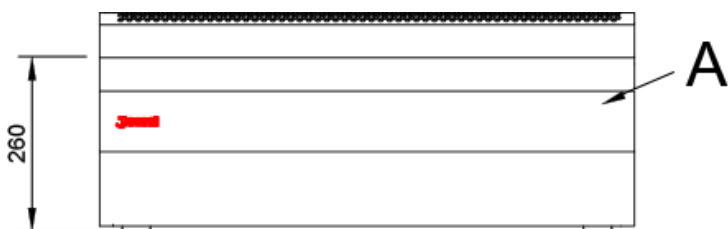
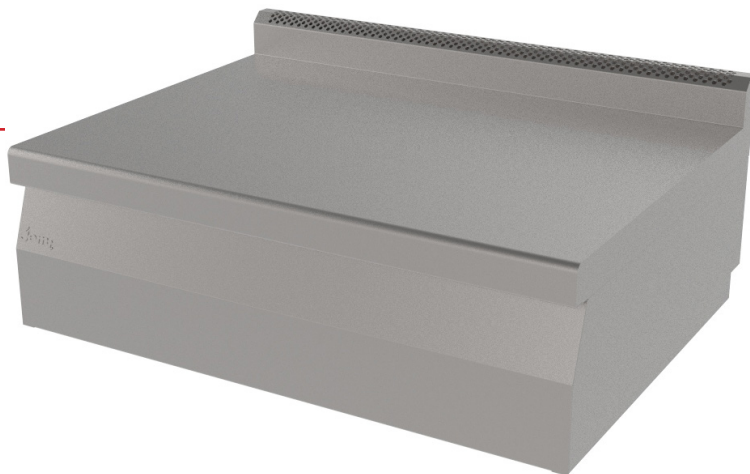
Mod. SMN67 EV

Características

Dimensiones exteriores 800 x 600 x 260 mm.

Peso 35 Kg.

Acero inox. (AISI 304) 2 mm.



Leyenda

A. Placa de características
(frontal interior)

