

# Technical Sheet

**Jemi** Simply built to last

Professional Dishwashing and Cooking Equipment

## Cookers 750 EV Series Electric Bain-Marie

Selva de Mar, 122-128  
08020 Barcelona, España  
Tel. 0034 93 308 31 54  
Fax. 0034 93 303 38 73  
jemi@jemi.es  
www.jemi.es

### Mod. SBME72 EV

#### Characteristics

Externals dimensions 400 x 750 x 380 mm.

Weight 28 Kg.

Voltage 230V. II + T

Interior dimensions 305 x 510 x 170 mm.

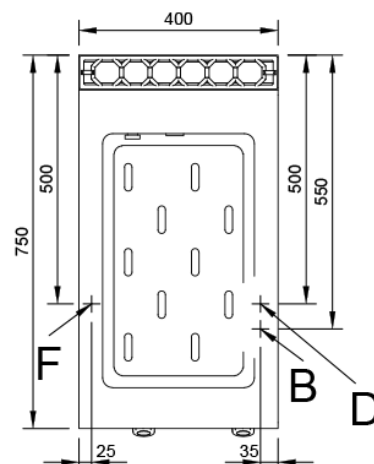
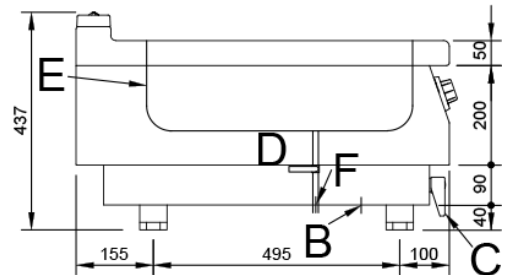
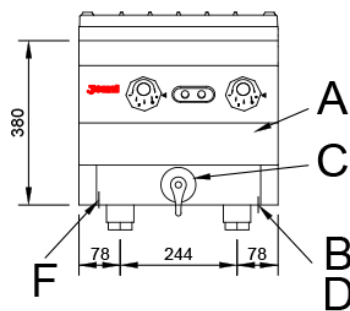
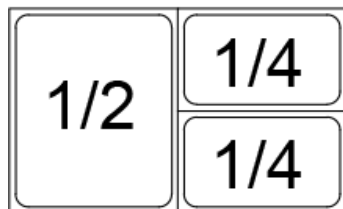
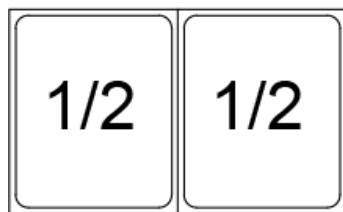
GN 1/1

Litres 20

Electric power 1,5 Kw.



#### 750 SERIES COMBINATION



#### Index

- A. Characteristics plate (inside panel)
  - B. Water inlet 1/2".
  - C. Filling faucet.
  - D. Drain.
  - E. Water level.
  - E. Electric inlet 230V. II + T.
- Power: 1,5 Kw.

